

UCSD RESEARCH PORTFOLIO

Miroslav Krstic

UC San Diego, April 15, 2016

UCSD (La Jolla, 1910)



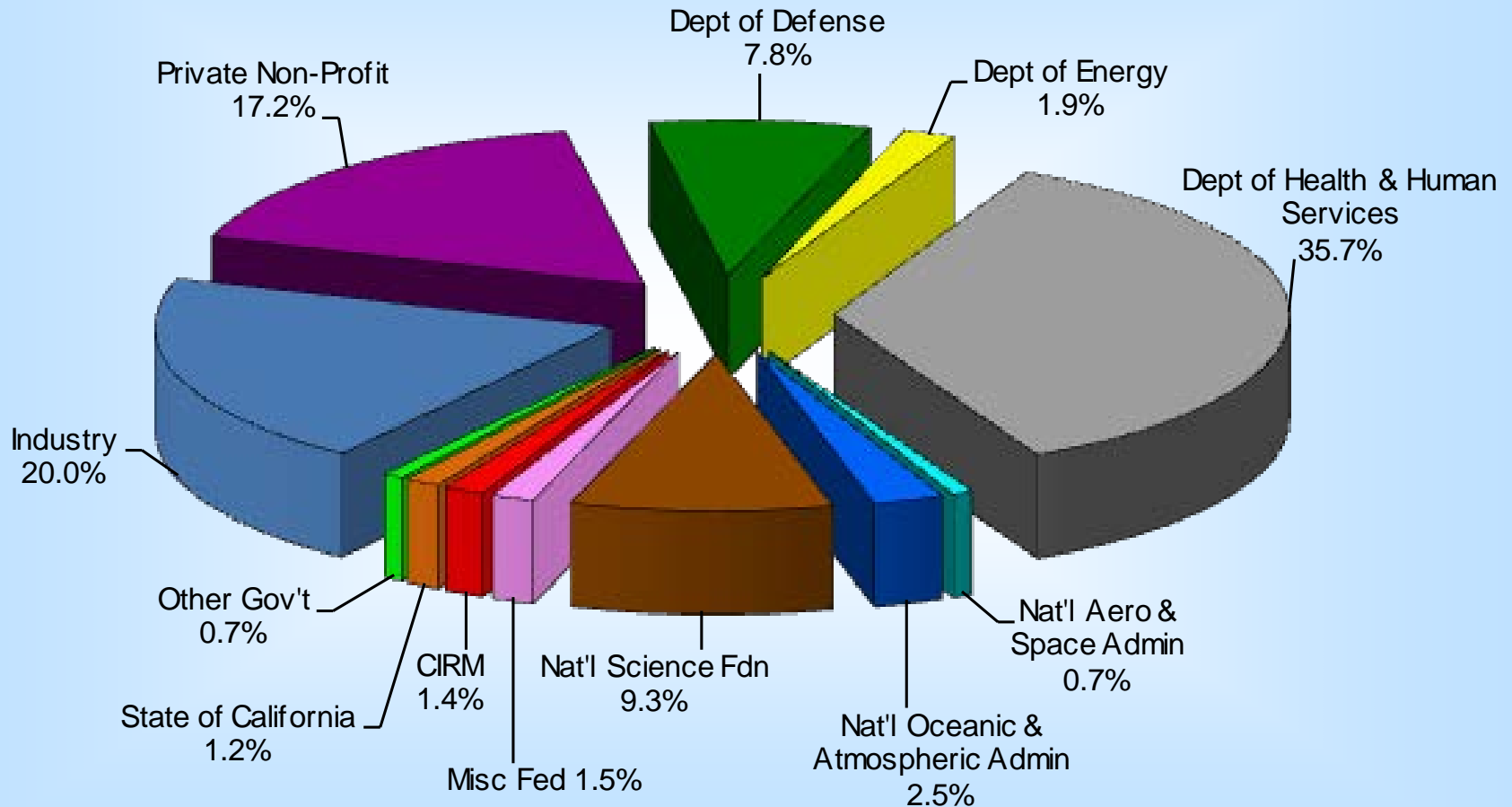
Highlights

- The youngest (major) campus in University of California system (est. 1964)
- Ranked #1 in external research funding in UC System and #5 in the United States (\$1 B/year)
- ~34,000 students (27% graduate)
- 1,500 postdocs (most in UC System)

Research Funding Sources

Awards by Major Agency FY2014

\$1,057,066,247



Highlights

- 1,200 professors
- 161 memberships in national academies:
 - NA Sciences: 84
 - NA Engineering: 27
 - NA Medicine: 50
- 16 Nobel laureates
- 14 National Medal of Science
- 1 Presidential Medal of Freedom

Rankings

- Nature: 13th in world, 6th in U.S. in research output
- Shanghai Jiaotong: 14th in world
- Washington Monthly: 1st in U.S. in “social mobility”
- NYT: 4th in U.S. in “economic diversity”
- 10th in U.S. in “salary earning potential”

Academic Divisions

- Scripps Institution of Oceanography
- Health Sciences
- Arts & Humanities (theater/dance)
- Social Sciences (cog. sci, psych, econ, poli sci)
- Global Policy & Strategy
- Rady School of Management
- Biological Sciences (#1 PhD program)
- Physical Sciences
- Jacobs School of Engineering

Research centers in SIO

- Inst Geophysics & Planetary Physics (MRU)
- Marine Physics Lab
- Aerosol Impacts on Climate & Environment
- Western Weather & Water Extremes
- Observations, Modeling & Prediction
- Marine Biodiversity & Conservation
- Marine Biotechnology and Biomedicine

Research centers in Health Sciences

- Moores Cancer Ctr
- Clinical & Translational Rsch Inst
- Inst Genomic Medicine
- Stein Inst for Rsch on Aging
- AIDS Research Inst
- Glycobiology Rsch & Training
- C for Acad. Rsch & Training in Anthropogeny

Research centers in Arts & Humanities

- Center for Hellenic Studies
- Center for the Humanities



Research centers in Social Sciences

- Yankelovich Ctr for Social Science Rsch
- various international and area studies programs (w A&H)

Research centers in GPS

- Inst Global Conflict & Cooperation (MRU)
- Policy Design & Evaluation Lab
- and more...

Research centers in Rady-Management

- Business Analytics
- Social Innovation & Impact
 - Management
 - Marketing
 - (Behavioral) Economics & Strategy
 - Finance
 - Innovation, Technology, Operations

Research centers in Physical Sciences

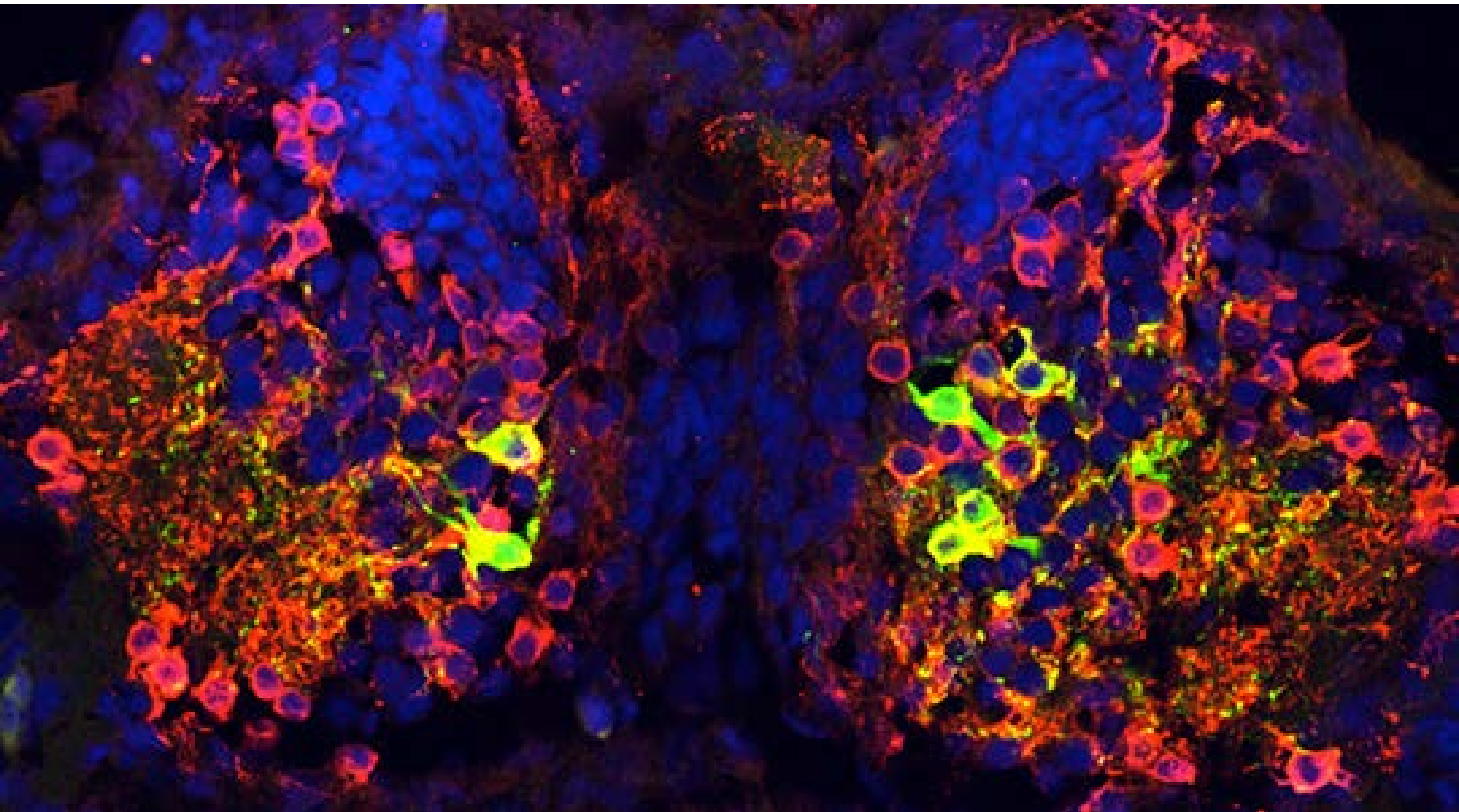


- Computational Mathematics
- Advanced Nanosciences (Phys)
- Aerosol Impacts on Climate & Environment (Chem)

Research centers in Jacobs School

- Contextual Robotics Inst
- Wearable Sensors
- Extreme Events Rsch
- Visual Computing
- Sustainable Power & Energy
- CHO Systems Biology
- Resilient Materials and Systems
- Networked Systems
- Wireless Communications
- Information Theory & Applications
- Powell Structural Research Labs
- Control Systems & Dynamics

Organized Research Units



Organized Research Units

□ *Biological*

- BioCircuits Inst
- Circadian Biology
- Drug Discovery Innovation
- Engineering in Medicine

□ *Neural & Cognitive*

- Human Development
- Rsch in Language
- Neural Computation
- Kavli Inst for Brain & Mind

Organized Research Units

- *Communication & Computing*
 - Qualcomm Institute (Calit2)
 - Supercomputer Ctr
 - Memory & Recording Rsch

- *Energy & Physics*
 - Astrophysics & Space Sciences
 - Energy Rsch
 - Food & Fuel for 21st Century

Organized Research Units

- *International & Societal*
 - Comparative Immigration Studies
 - Iberian & Latin American Studies
 - Global Justice

New centers resulting from Strategic Plan

- 1. Understanding and Protecting the Planet**
 - Center for Biological Timing in the 21st Century
 - Sustainable Power and Energy Center
- 2. Enriching Human Life and Society**
 - Center for Translational Computer-Aided Drug Discovery & Project Management
 - Center for Compound Resources
- 3. Exploring the Basis of Human Knowledge, Learning and Creativity**
 - Institute for Integrative Science of the Developing Mind and Brain
- 4. Understanding Cultures and Addressing Disparities in Society**
 - Center for Research on Gender in STEMM
 - The UC San Diego Community Stations